

TRUCKS AND BUSES



WHERE STYLE MEETS COMFORT.

Eicher Skyline Staff Buses
28 to 50 Seater Buses



EUTECH 6

EUTECH 6

Eicher is creating a new benchmark in the Indian commercial vehicle industry, through a revolutionary BSVI solution that combines global technology with innovative support services. This solution not only makes your vehicle BSVI compliant but also ensures higher productivity of the bus and profitability of your business.



Euro VI Expertise for 6 years

VECV has been manufacturing and supplying base engines to the Volvo Group since 2013. Over 1,00,000 Euro VI base engines supplied, operating in 41 countries. First to roll out BSVI CV range in India, incorporating expertise of Euro VI technology.



Efficient EATS and engine technology

Best fluid economy: Lower fuel consumption + DEF consumption combined. Reliable EATS + engine technology tested for over 56,00,000 km. Duty cycle based SCR for high reliability & low maintenance.

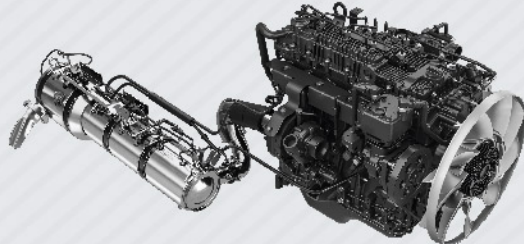


Enhanced UPTIME

Eicher Uptime Centre for 24x7 support by specialists. GPS enabled service vans just a phone call away. Remote diagnostics for quick repair of BSVI vehicles.

High Performance Engine

The Skyline range is powered by Eicher's next-generation E494 and E474 engines, which offer the dual benefits of higher power and high fuel efficiency. The flat torque curve ensures smoother drives with less gear shifts. Leveraging Eicher's Euro VI experience, these new engines are designed to be light weight, silent, powerful and efficient.



FUEL EFFICIENT E474 ENGINE: 4 CYLINDER, 4 VALVE, 3 LITRES CRS ENGINE



The All New **SKYLINE** is completely revamped with distinctively premium looks, wider bus body, silent & grease free parabolic suspension and radial tubeless tyres. Skyline buses offer the right blend of style, comfort and performance to ensure that every journey of passengers is safe & comfortable. BSVI Skyline range is driven by state-of-the-art E494 and E474 engines which provide powerful performance in all applications. Superior fuel efficiency coupled with lower maintenance cost leads to high profitability of Skyline range of staff buses.



Comfort & Convenience.

Skyline buses offer wide, comfortable seats with ample shoulder room in HHR and Push-back options. Silent parabolic suspensions and tubeless tyres provide superior ride-comfort. The complete range is available with AC option and features like USB charging ports and individual AC vents that makes the Skyline Executive range the best transport solution for staff application.



Spacious and Comfortable Seats



Intelligent Driver Information System

New-Gen Features.

Eicher Live lets you track your vehicle and glance at vital performance parameters at the touch of a button. Fuel coaching and Mbooster+ enable the driver to operate the bus in the most fuel efficient manner. The Intelligent Driver Information System keeps the driver informed of all the key parameters through an easy to read display and tell-tales.



AC Bus Range



Enhanced Suspension



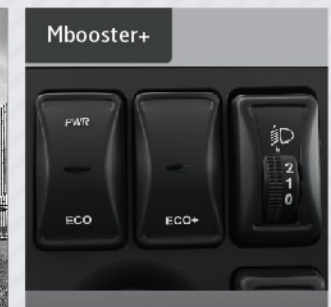
Radial Tubeless Tyres



Fuel Coaching



Telematics – Eicher Live



Mbooster+

Pleasing Aesthetics.

The front fascia sports Eicher's latest Uni-tone design with accentuated headlamp cluster. Soft-feel PVC coated panels give the interiors a superior appeal. Functionality has been integrated in the design through front openable panel, convenient step-height, minimal wheel humps and rear storage space.



Distinctive Looks – Front Fascia

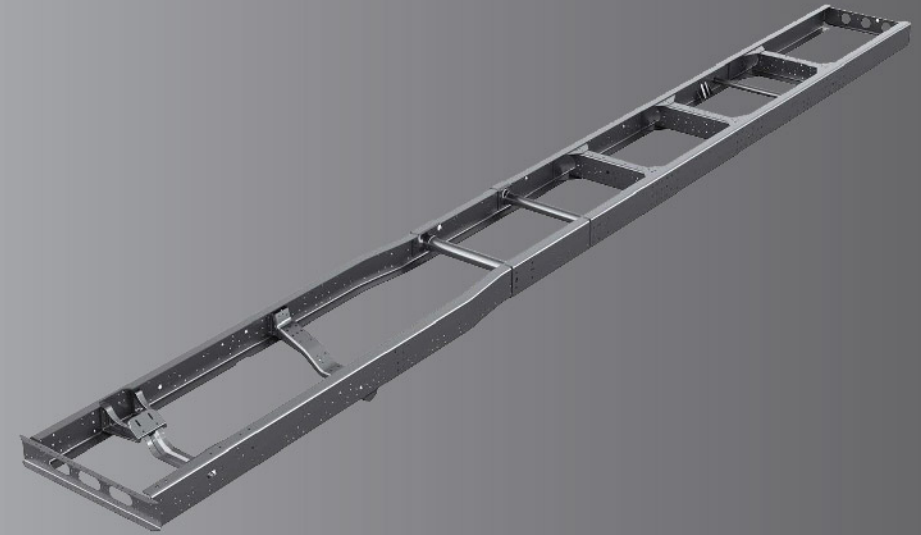
Refreshed Interiors
– Interior Panels



Functional Design –
Rear Dickey



New 3 Spoke Steering
Wheel

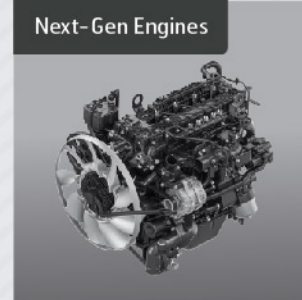


Domex® Chassis

Reliable and Strong.

Eicher's all new E474 engine delivers high power and torque while remaining true to the promise of best in class fuel efficiency. The Skyline range comes with the highly reliable Domex® 650 chassis, corrosion free HDPE DEF tank and grease free parabolic suspensions.

Next-Gen Engines

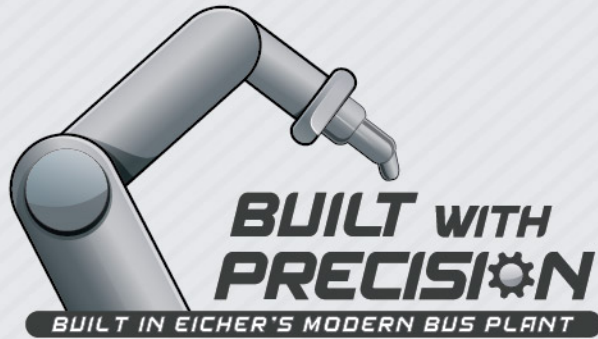


HDPE DEF Tank



Parabolic Suspension
With Anti Roll Bar

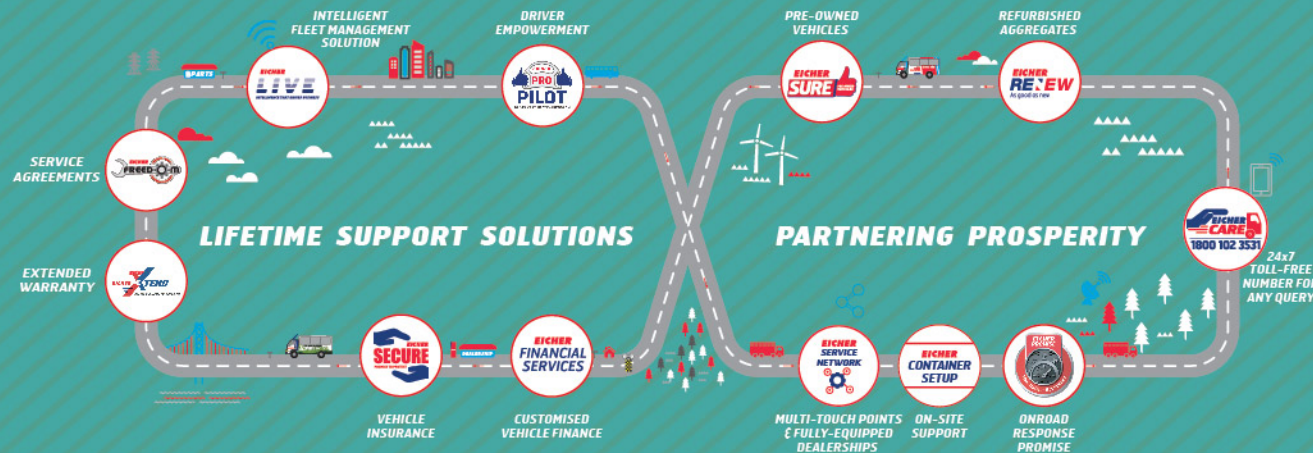




We manufacture buses with high level of precision by using advanced technology like panel fitments, inverter based welding, shower testing, robotic painting and pneumatic grippers in our modern bus plant to deliver superior build quality.



Lifetime Support Solutions.



With our Lifetime Support Solutions, we ensure a seamless and hassle-free experience from the time you consider buying an Eicher vehicle to the time you think of selling it. Our continuously improving and holistic services will ensure higher uptime and productivity for your BSVI vehicles.

*Pro-Pilot, Eicher Sure and Eicher Container set-up is not available for Eicher Bus range



Eicher has taken a step towards achieving Superior Uptime with a responsive attitude, that will set us apart and create a differentiated experience for our customers. With our new Uptime Center and Uptime Certified Workshops, we are now geared up with a proactive support system for diagnostic assistance with advanced diagnostic tools.



At Uptime Certified Workshops only
*TEC Apply

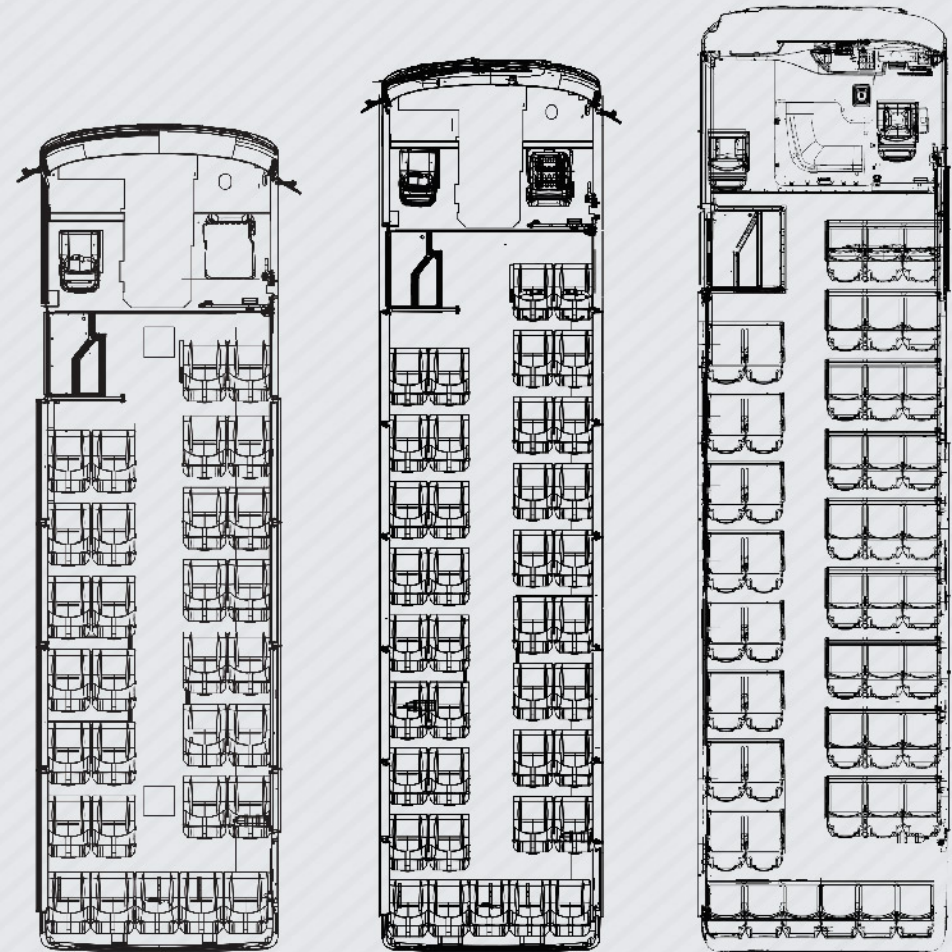
Model Name	2075 H	2090 L	2112 M
Seating capacity	31+1+D HHR 2x2 27+1+D PB 2x2 - AC	39+1+D HHR 2x2	49+1+D HHR 3x2
Wheelbase (mm)	4320	5240	5330
Overall length (mm)	8112	9584	9970
Overall width (mm)	2350		2590
Overall height (mm)	2865 - NAC 2975 - AC	2960 - NAC 3070 - AC	3345 - NAC 3465 - AC
Ground clearance (mm)	187		232
Front overhang (mm)	1200		1450
Rear overhang (mm)	2592	3144	3190
Turning circle diameter (m)	16	19.4	
Engine make	E474		E494
Displacement (cc)	2960		3770
Power	120 hp (90kW) @ 3200 rpm - NAC/ 140 hp (105kW) @ 3200 rpm - AC	140 hp (105kW) @ 3200 rpm (NAC & AC)	160 hp (120kW) @ 2600 rpm (NAC & AC)
Torque	350 Nm @ 1200-2500 rpm - NAC/ 400 Nm @ 1200-2500 rpm - AC	400 Nm @ 1200-2500 rpm (NAC & AC)	500 Nm @ 1200-1800 rpm (NAC & AC)
Clutch (mm)	310		330
Transmission make	ET35S5	ET35S6	ET40S6
Transmission type	Synchromesh 5-Speed + 1 Rev	Synchromesh 6-Speed + 1 Rev	
GVW (Tonnes)	8.4	9.9	13.1
Chassis type	Domex® 650		
Chassis dimension (mm)	200x65x5		210x76x6
Fuel tank capacity (l)	100	160	190
Brakes	Dual circuit 'S' cam full air brakes		
Tyres	235/75 R17.5-14 PR (Radial tubeless)		9R20-16 PR
Suspension	Parabolic with ARB - front Parabolic - rear		Weveller suspension
Steering	Power steering		
Battery	12 V, 130 Ah - (NAC & AC)		12 V, 130 Ah - NAC 2x 12 V, 130 Ah - AC
Alternator	110 A - NAC, 2x 110 A - AC		110 A - NAC, 2x 120 A - AC
Flooring	Silicon embedded vinyl		
HDPE DEF tank capacity (l)	20		25
Air conditioning	Options available		

AC : Air-conditioned, NAC : Non Air-conditioned, PB : Pushback, ARB : Anti-roll Bar

VE COMMERCIAL VEHICLES
A VOLVO GROUP AND EICHER MOTORS JOINT VENTURE
eichertrucksandbuses.com, Eicher Care: 1800 102 3531

VE COMMERCIAL VEHICLES LTD.
Registered Address – 3rd Floor Select Citywalk,
A -3 District Centre, Saket, New Delhi 110 107, India.
CIN – U74900DL2008PLC175032

CORPORATE ADDRESS
Eicher Trucks & Buses
#96, Sector – 32, Gurgaon
122001, Haryana, India.



Model name : Skyline 2075 H
Seating capacity : 31+1+D

Model name : Skyline 2090 L
Seating capacity : 39+1+D

Model name : Skyline 2112 M
Seating capacity : 49+1+D



Caution: *Do not weld or drill on chassis frame. *Accessories and features shown in pictures or elsewhere may not constitute standard fitment. *Weight mentioned is for standard configuration with standard body sizes and will change due to optional fitments. *As a result of continuous research and innovation carried out, specifications are merely indicative and are subject to change without notice.